

APRIL 3, 2025

Amplify



TABLE OF CONTENTS

02

WELCOME LETTER
from the WLC Event Co-Chairs

03

CONFERENCE AGENDA

04

GENERAL INFORMATION

05

A NOTE FROM PRESIDENT DORAN
Bay Path University

08-14

KEYNOTE SPEAKERS

18-22

BREAKOUT SESSIONS

23-37

SPONSORS
Thank you!

41

EXHIBITORS

MEET THE WLC EMCEE NIKAI FONDON

Nikai Fondon is the CEO and Founder of Evolve Her Enterprises, specializing in marketing, communications, and media consulting. A recognized leader in her community, she was honored as a *BusinessWest* 40 Under 40 award recipient for her impact and dedication. Nikai serves as Vice-Chair of the Board for Girls Inc. of the Valley and chairs the DEI Committee for the Young Professionals Society of Greater Springfield.

She is also the creator of the award-winning podcast *She Did That!*, which highlights the achievements of young women of color across various industries. Her work reflects her passion for amplifying underrepresented voices and fostering meaningful change.

EVOLVE HER ENTERPRISES
NIKAI FONDON



WELCOME!

Welcome to the 28th Annual Women's Leadership Conference!

It is so great to welcome everyone today for what promises to be another motivating and transformative day together! We invite you to magnify the brilliance of your voices, strengths, and potential alongside a vibrant community of professionals who share your passion for growth, learning, and opportunity. This year, we're here to **Amplify!**

"Amplify" is our theme, and today, we offer you the space to tune into your own voice, to help it guide you to your most confident self, and then look for ways to **amplify** it—at work, in your relationships, and in all the places where your presence and your perspective can make a Difference.

Three amazing speakers will amplify the day. Entrepreneur Erin King will open the day by sharing her breakthrough study on personal human energy, the essence that defines how we show up, how we're perceived, what charges us up and drags us down—and how we can use this energy to unlock our potential. In the afternoon, you'll get inspired by the incredible adventures of Amelia Rose Earheart. True to her name, Amelia's journey has taken her around the world by plane, and she'll discuss how she's learned to stay agile, curious, confident, and resilient in the face of life's turbulence. And finally, we'll close the afternoon with the wisdom and warmth of Hoda Kotb. Hoda has been a beloved friend to the millions who've watched her on the *Today* show; a trusted, steady voice covering wars in Iraq and Afghanistan, the 2004 tsunami in Southeast Asia, and Hurricane Katrina in New Orleans; and now, a committed mother to her two young daughters, a role she has prioritized by re-shifting her professional goals.

We are so overwhelmingly grateful that 55 businesses, the most ever, are sponsoring the

conference and recognize the impact of being connected to this annual event! This collaboration allows us to bring the highest caliber of programming and professional development to Springfield, benefiting our region's workforce and community members and making the WLC the premier event it is. A special thank you to Zasco Productions for supporting our event at the Amplify level sponsorship and PeoplesBank and The Republican for their Platinum level sponsorships - we couldn't do it without you!

Today would not be possible without the help and support of our dedicated marketing and communications teams. Their support and willingness to do what it takes to make this day come to life! And, of course, our WLC would not be possible without the encouragement and confidence of our president, Sandra J. Doran, and the entire Bay Path University leadership team.

In addition to the keynote and breakout sessions, we have designed ample networking opportunities. Take advantage of these moments to forge new connections, exchange ideas, and collaborate with fellow attendees. Remember, the relationships you build here can lead to invaluable partnerships and mentorships that will amplify your professional development long after the conference concludes!

Don't forget to explore our shopping area, where you can find unique products and services. Supporting these entrepreneurs boosts our community and inspires us all to pursue our dreams with tenacity and creativity.

We are excited to see you settle in to engage, learn, and grow throughout this conference. Today is about YOU!

Let's AMPLIFY this day!



Karen Woods

KAREN WOODS
AVP, Brand Strategy,
Marketing and Communications
Bay Path University
WLC Event Co-Chair



Melissa Welch

MELISSA WELCH '06 G'11
Communications
and Content Director
Bay Path University
WLC Event Co-Chair

CONFERENCE AGENDA

REGISTRATION, NETWORKING, AND CONTINENTAL BREAKFAST Upper & Lower Level Foyers	7:30 AM
WELCOME AND INTRODUCTION Exhibition Hall, Lower Level	8:30 AM
MORNING KEYNOTE ADDRESS Erin King, researcher, bestselling author, global keynote speaker, and the world's leading energy management expert	8:45 AM
BREAK – SHOP - NETWORK MassMutual attendees! Please head to the main stage for a group photo	9:45 AM
MORNING BREAKOUT SESSIONS	10:05 AM
BREAK – SHOP - NETWORK	11:15 AM
LUNCH 21st Century Women Business Leaders Hall of Fame Induction	11:45 AM
LUNCHEON KEYNOTE ADDRESS Amelia Earhart, round the world pilot, author, & global keynote speaker	12:15 PM
BREAK – SHOP - NETWORK Bay Path Alumni! Please head to the main stage for a group photo	1:15 PM
AFTERNOON BREAKOUT SESSIONS	1:35 PM
BREAK – SHOP - NETWORK	2:45 PM
PRESIDENT'S ADDRESS Bay Path University President Sandra J. Doran, J.D.	3:00 PM
AFTERNOON KEYNOTE ADDRESS Hoda Kotb, former co-anchor of NBC News' TODAY and the former co-host of TODAY with Hoda & Jenna	3:15 PM
CLOSING REMARKS	4:15 PM

**CELL PHONE USE**

Please be respectful of speakers and other attendees and remember to silence your cell phones while in keynote or breakout sessions.

**SEATING**

Your table is listed on your name badge, or you may check with the volunteers in the ballroom.

**BREAKOUT SESSIONS**

The Breakout Sessions you selected are listed on your name badge.

**LUNCH**

Lunch options include the following sandwiches and side salads:

- Thinly sliced turkey breast on wheatberry bread with whole grain honey mustard, mixed greens, tomato, and gruyere
- Shaved prime rib of beef on brioche bread with artisan greens, tomato, provolone, and horseradish yogurt dressing
- Fresh mozzarella and tomato Caprese on focaccia bread with artisan greens, basil pesto, and balsamic drizzle
- Carrot, apple, cucumber, chickpeas, and kale tossed with apple cider dressing
- Greek tortellini salad with olives, feta, roasted peppers, artichoke hearts tossed with Greek dressing

If you have questions about allergens or dietary restrictions, please speak to your MassMutual server.

**PLEASE RECYCLE YOUR NAME BADGES**

in the designated boxes as you leave.

**LOST AND FOUND**

Lost and Found will be located at the Information desk on the lower level. After the conference, you will need to call the MassMutual Center for items.

**NURSING MOTHERS**

Meeting Room 5 will be available for nursing mothers.

**RESTROOMS**

Men's restrooms are located in Exhibition Hall A to your left as you exit for the room, and on the lower level meeting room pre-function space (foyer). Please see a volunteer for additional help if needed.

**MEDIA WILL BE ATTENDING**

Please be advised your name or image MAY appear in print, radio, television, social media or web coverage.

**ASSISTED LISTENING DEVICES**

Assisted listening devices are available at the Information Desk on the lower level.

A NOTE FROM BAY PATH UNIVERSITY

Greetings!

It is a joy to welcome you to Bay Path University's annual Women's Leadership Conference, our 28th! Each year, we dream up, plan out, and put together this day, with the goal of bringing our community together to inspire, support, and learn from each other. This year, we gather to **Amplify!**, offering this day for you to step into your most confident self, bolster and boost your voice, your strength, and your potential, and then look for ways to bring that confidence to your work, your organizations, and your communities.

Today, you'll hear from phenomenal speakers who will tell their stories, share their lessons, and inspire you to amplify your voice—with clarity and conviction, amplify your career—with intention and direction, and amplify your presence—with strength and confidence. You will attend break-out sessions that will shift your perspectives, and you will visit exhibitors representing the small businesses and community organizations that capture the vibrance of our region.

The WLC is an extension of Bay Path's mission to provide career-focused learning that positions our learners to continually grow their careers, throughout their lives.

There is an inherent drive and determination that keeps propelling Bay Path and our learning community forward, and we hope you will feel that—and that you will tap into it as you make your way through this day.

We hope you will use this day to learn, network, and connect. We are all here to Amplify ourselves—and each other.

In the spirit that guides this great conference and Bay Path University,

Carpe Diem!



SANDRA J. DORAN, J.D.

President, Bay Path University



GRADUATE PROGRAMS AT BAY PATH UNIVERSITY



From credentialing certificates through doctorate degrees, Bay Path University's graduate programs for women and men are flexible and designed so that students can advance their education while continuing to work. Bay Path University continues to be recognized by organizations, publications, and the media for accomplishments in and out of the classroom.

With degrees offered in business, education, healthcare, and more, Bay Path can help you advance your career.

DEGREES OFFERED IN:

- Accounting
- Applied Behavior Analysis
- Applied Data Science
- Clinical Mental Health Counseling
- Creative Nonfiction Writing (MFA)
- Cybersecurity
- Developmental Psychology
- Doctor of Nursing Practice (DNP)
- Early Childhood Education
- Educational Leadership Doctorate (EdD)
- Elementary Education
- English as a Second Language
- Genetic Counseling
- Health Science Doctorate (DHSc)
- Healthcare Management
- Master of Business Administration (MBA)
- Nursing (MSN)
- Occupational Therapy (MOT)
- Occupational Therapy Bridge Program (MOT)
- Occupational Therapy Doctorate (OTD)
- Organizational Leadership & Negotiation
- Physician Assistant Studies
- Public Health
- Reading & Literacy Instruction
- Special Education
- Special Education Administrator



LEARN MORE AND APPLY
[BAYPATH.EDU/GRADUATE](https://baypath.edu/graduate)

GRADUATE@BAYPATH.EDU
413.565.1700



It's Simple.

Amplified voices, Unstoppable women!

We are proud to be a long-standing partner of Bay Path University, supporting their mission and initiatives over the years.

 PeoplesBank

Real. Simple. Banking.

bankatpeoples.com



Member FDIC



MORNING KEYNOTE

ErinKing.com

Mrs.Erin.King

MrsErinKing

MrsErinKing

ERIN KING

RESEARCHER, BESTSELLING AUTHOR, GLOBAL KEYNOTE SPEAKER,
AND THE WORLD'S LEADING ENERGY MANAGEMENT EXPERT

They call her “The Energy Expert.”

After a serious health scare, three-time entrepreneur Erin King put her entire life on pause, and spent a full year conducting the world's largest study on personal human energy management alongside a team of award-winning PhD researchers.

Fast forward to today, and King is widely regarded as one of the world's leading energy management experts. SUCCESS Magazine named her one of their Top 10 Must-See Motivational Speakers of 2024 alongside Mel Robbins and Jay Shetty.

As the creator of The Energy Exam®, the world's first scientific assessment to discover your unique “energy instinct”, King has been hired by Google, Disney, The Academy Awards, VISA, Adobe, and even the United States Navy to unlock peak performance, transformative leadership, and more intentional living.

King has delivered standing ovation keynotes from Bali to Amsterdam and everywhere in between. Her peak performance insights have been featured in *Forbes* among other global publications and her podcast consistently ranks in the top 1% of all downloads on iTunes.

Off-duty you'll find her playing all the outside sports with her husband Hartman, or hanging out with her huge, lively Irish family. And finally: if kissing your dog (Miss Betty White) directly on the mouth is wrong—Erin does not want to be right.



HALL OF FAME

The Twenty-First Century Women Business Leaders Hall of Fame concept at Bay Path University was originally conceived as a way to encourage and motivate students, especially those in the business curriculum, by profiling inspiring businesswomen in a virtual hall of fame for our students to emulate.

The criteria for nomination to this virtual hall of fame came about through a class project in the spring of 2004, whereby Bay Path business students contacted female senior executives at Fortune 500 companies via email and asked them for their thinking on the makings of a great leader.

After compiling the responses, seven key characteristics appeared repeatedly.

These characteristics, listed below, now form the basis for nomination to Bay Path's Twenty-First Century Women Business Leaders Hall of Fame.

► NOMINEES

for Bay Path's Twenty-First Century Women Business Leaders Hall of Fame will possess the *following characteristics*:

Takes risks &
**assumes
responsibility**

Serves as a
**mentor
to others**

Possesses an
**innovative and
entrepreneurial spirit**

Maintains an
optimistic attitude
that creates a positive workplace

Incorporates
integrity, accountability,
and a strong sense of business ethics
in her day-to-day management style

Adheres to a
**collaborative management
style that fosters teamwork**
as well as individual excellence

Values education
**as a way to learn
new ideas,**
improve communication
and remain curious and open-minded

WBLHOF NOMINEE

MICHELLE WIRTH

Owner

Mercedes-Benz of Springfield

Founder,

FeelGoodShopLocal.com



MICHELLE WIRTH

After a 15-year career with Mercedes-Benz USA, Michelle and her husband relocated to Western MA from northern NJ in 2017 to open Mercedes-Benz of Springfield, a dealership dedicated to sales and service of Mercedes-Benz passenger cars and vans.

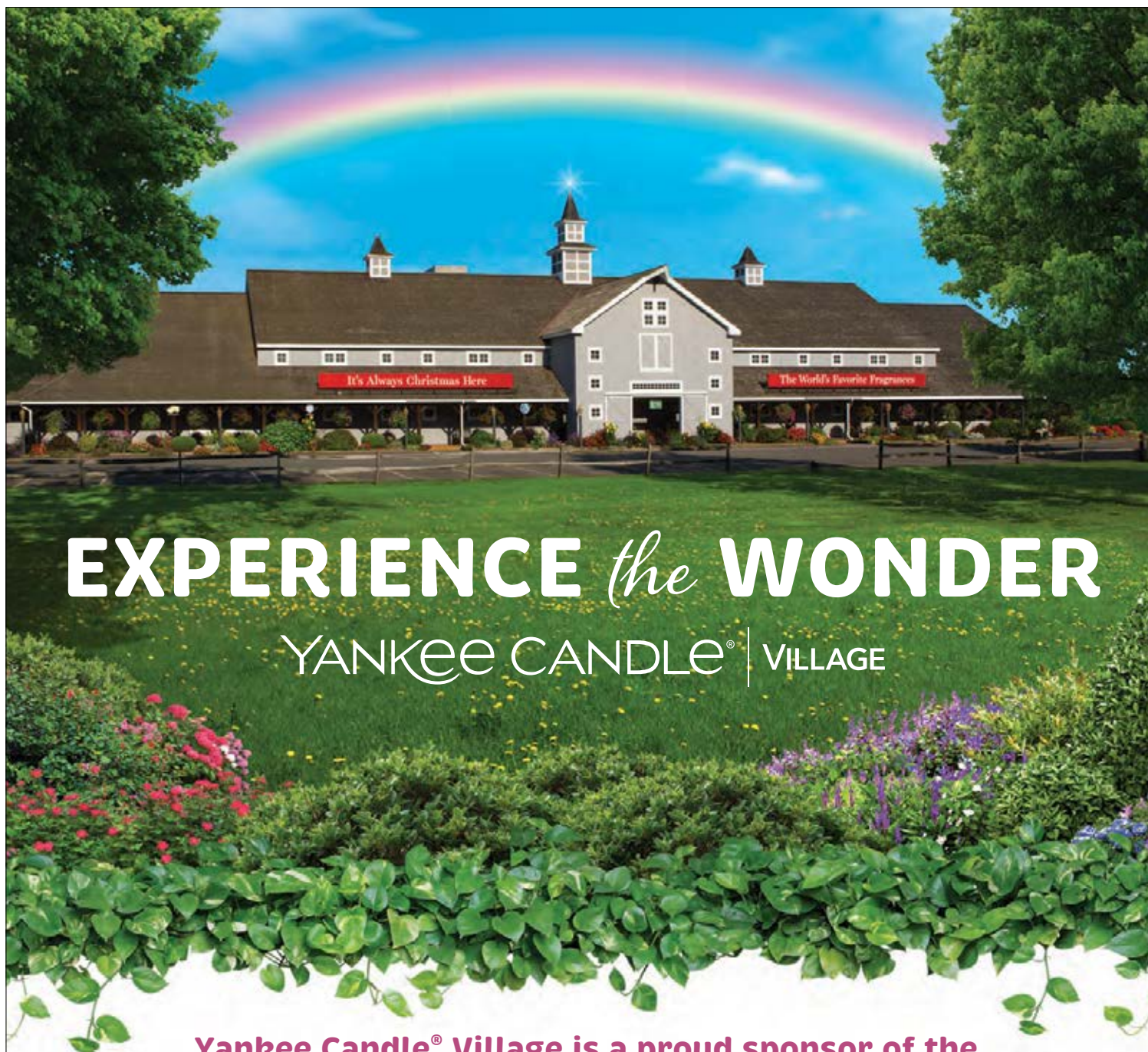
At MBUSA, Michelle held positions in engineering, public relations and led the team responsible for producing and placing Mercedes-Benz integrated marketing campaigns nationally.

In 2022, she launched FeelGoodShopLocal.com - an innovative online website with a mission - to help local businesses thrive by making it fun and easy to shop a curated selection of local, small merchants and makers online, anytime.

Both businesses have won numerous awards. Most recently, Feel Good Shop Local was awarded the A+ Innovation Award by the Amherst Area Chamber of Commerce and both Mercedes-Benz of Springfield and FeelGoodShopLocal.com were awarded the Super60 Award in the same year by the Springfield Regional Chamber of Commerce.

Michelle was awarded *BusinessWest* 40 Under Forty (2018), Working Mother of the Year (2015) by the Advertising Women of New York and *Working Mother Magazine*. She holds various volunteer positions including Chair of the YPO International Business SubNetwork, officer on the YPO Northeast regional board and held positions in the local CT River Valley Chapter of the Young Presidents Association (YPO) since 2018. She serves on the Cooley Dickinson Development committee, served as a Corporator for Florence Bank and has served as a Trustee of the Board of Directors at Bay Path University in Longmeadow, MA.

She speaks three languages, is blissfully married, and has 4 children - three boys ages 15, 14, 11, and a 7-year-old girl.



EXPERIENCE *the* WONDER

YANKEE CANDLE® | VILLAGE

Yankee Candle® Village is a proud sponsor of the 2025 Women's Leadership Conference

Whether you're looking for one-of-a-kind shopping, make-your-own candle experiences, or fun at Build-a-Bear® Workshop, Yankee Candle® Village has something for everyone. During your visit, explore Santa's Workshop and wander through our Bavarian Christmas Village where it snows every 4 minutes...inside! Sweeten your trip at our Fudge Shop and Yankee Candy - featuring 125 different types of candy.

VISIT US TODAY!



Amplify your savings!
Scan here for special offers
(\$20 off \$45 and \$50 off \$100)

Open 10am-6pm daily
I-91, Exit 35 • 25 Greenfield Road, South Deerfield, MA
(877) 636-7707 • yankeecandle.com/village

LUNCHEON KEYNOTE

 ameliaroseearhart.com

 [ameliaroseearhart](https://www.facebook.com/ameliaroseearhart)

 [ameliaroseearhart](https://www.instagram.com/ameliaroseearhart)

 [Amelia Rose Earhart](https://www.linkedin.com/in/AmeliaRoseEarhart)

AMELIA EARHART

AROUND THE WORLD PILOT, AUTHOR, GLOBAL
KEYNOTE SPEAKER & ARTIST



If you were given the name Amelia Earhart, would you learn to fly?

Professional speaker, pilot, author and artist Amelia Rose Earhart was faced with this exact question... and chose to go all in, completing her private, instrument and commercial flight training with the goal of someday flying all the way around the world- just like the incredible American hero she was named after- Amelia Mary Earhart.

In 2014, she completed her goal- circumnavigating the globe along a 28,000 nautical mile route- all in a single-engine aircraft.

This modern-day Amelia Earhart says the most important lesson she learned during her journey is that in order to truly succeed, and also grow along the way, we need to learn to love life's turbulence- by staying agile amidst the storms that inevitably pop up along each of our paths.

Amelia has fifteen-years of experience as a helicopter and breaking news reporter in Denver and Los Angeles, has sent numerous teenage girls to flight school during her ten-year stretch as president of the Fly With Amelia Foundation, hosts a tech podcast focused on the future of AI in business, and is now turning her aerial photos into original paintings. She has been invited by Apple Computers, Boeing, American Express, Berkshire Hathaway, United Healthcare and dozens of other industry leaders to share her story.

In her recently published book, *Learn to Love the Turbulence: "Flight Lessons"* on becoming the pilot in command of your own journey, Amelia shares ways to think like a pilot to move through life with agility and confidence. Learn more about Amelia at AmeliaRoseEarhart.com.

**Congratulations to Bay Path University
on another amazing
Women's Leadership Conference!**



(413) 534-6677 info@zasco.com

**Proud WLC production provider
for the last 19 years!**

AFTERNOON KEYNOTE

HODA KOTB

REAL ESTATE ENTREPRENEUR,
AUTHOR & SHARK TANK EXECUTIVE
PRODUCER AND SHARK

Hoda Kotb has claimed her role as one of America's foremost journalists, authors, and entertainers. Most well known as the former co-anchor of NBC News' *TODAY* and co-host of *TODAY with Hoda & Jenna*, she is also the host of the popular podcast, *Making Space with Hoda Kotb*. Kotb joined *TODAY* as a co-host of the fourth hour in 2008, alongside Kathie Lee Gifford, and recently departed following 17 successful years with the show.

Since joining NBC News in 1998, Kotb has served as a correspondent for Dateline NBC. She has covered a wide variety of domestic and international stories across all NBC News platforms as well as numerous human-interest stories and features. She covered the aftermath of Hurricane Katrina, a story personal to Kotb who lived in New Orleans for six years. Additionally, she reported on the war in Iraq, the conflict in the West Bank and Gaza, and the War on Terror in Afghanistan. Kotb was a part of the network's extensive coverage of the 2008 Summer Olympics in Beijing, 2010 Winter Olympics in Vancouver, 2012 Summer Olympics in London, 2014 Winter Olympics in Sochi, 2016 Summer Olympics in Rio, 2018 Winter Olympics in Pyeongchang, the 2021 Summer Olympics in Tokyo, and the 2024 Summer Olympics in Paris.

A New York Times bestselling author, Kotb has written eight books: *You Are My Happy; I've Loved You Since Forever; Where We Belong; Ten Years Later: Six People Who Faced Adversity and Transformed Their Lives; Hoda: How I Survived War Zones, Bad Hair, Cancer and Kathie Lee; I Really Needed This Today; This Just Speaks to Me; Hope is a Rainbow*.

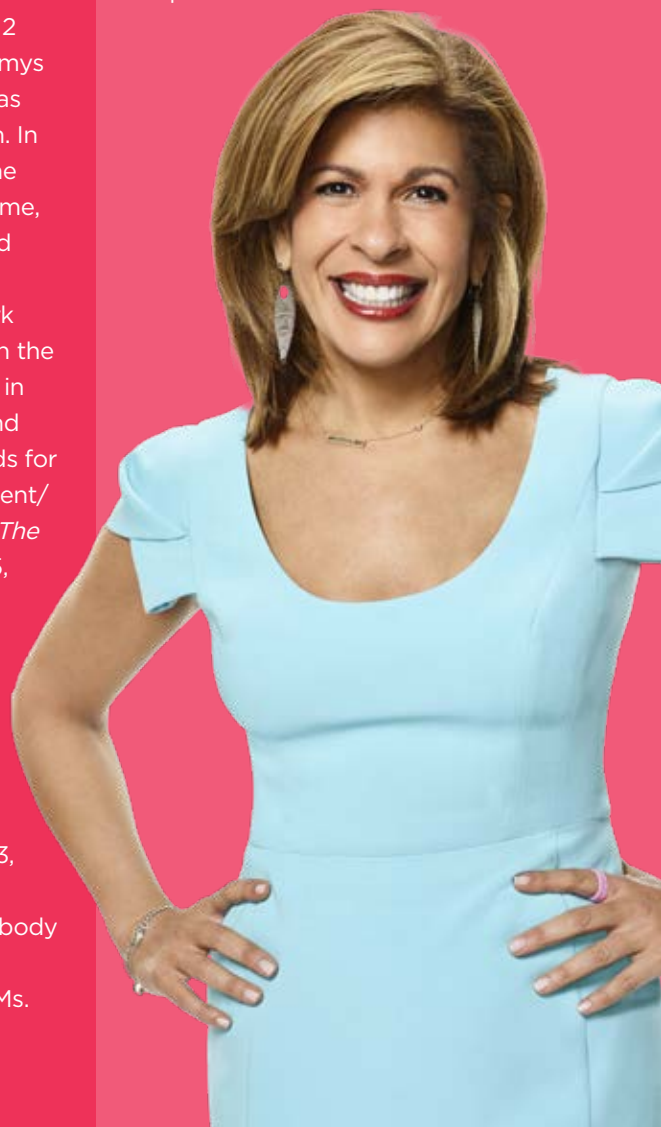
Kotb was recognized with a 2019 Emmy Award for Outstanding Informative Talk Show Host for her work on *TODAY with Kathie Lee and Hoda*. In 2010, 2011, and 2012 Kotb was awarded Daytime Emmys as part of *TODAY's* recognition as the best morning news program. In 2022, Kotb was inducted into the Broadcasting & Cable Hall of Fame, and she received a Gracie Award for On-Air News Talent. In 2021, she was recognized by New York Women in Communications with the Matrix Award for her excellence in broadcast journalism. In 2016 and 2018, she received Gracie Awards for Outstanding Host in Entertainment/Information for her radio show, *The Hoda Show* on SiriusXM. In 2015, she was honored with a Gracie Award for Outstanding Host in News/Non-fiction and a Webby Award for her 'Truly Brave' music video, which focuses on pediatric cancer. Kotb received additional Gracie Awards in 2008 and 2003, the Alfred I. duPont -Columbia University award in 2008, a Peabody Award in 2006 for her Dateline NBC report, "The Education of Ms.

Groves" and a 2002 Edward R. Murrow Award. Prior to joining NBC News, Kotb worked at WWL-TV, the CBS affiliate in New Orleans from 1992 to 1998 as an anchor and reporter for the 10 p.m. news broadcast. From 1989 to 1991, she was a weekend anchor and reporter for WINK-TV in Fort Myers, Florida.

Kotb graduated from Virginia Tech University with a Bachelor of Arts in broadcast journalism. She resides in the suburbs of New York City with her two daughters, Haley Joy and Hope Catherine.

 HodaKotb

 HodaKotb





**TOGETHER
WE
THRIVE**

FOR OVER 85 YEARS

ARAMARK

HAS BEEN ROOTED IN SERVICE
DOING GREAT THINGS FOR

OUR PEOPLE

OUR PARTNERS

OUR COMMUNITIES

AND OUR PLANET

PROUD TO SUPPORT THE BAY PATH UNIVERSITY
WOMEN'S LEADERSHIP CONFERENCE

aramark 

***“Leadership is
about making
others better
as a result of your
presence and
making sure
that impact
lasts in your
absence.”***

- Sheryl Sandberg,
Tech executive, writer
and philanthropist



The Republican.

200 Years Old. **Brand New Every Day.**

Proudly supporting Bay Path University and the 2025 Women's Leadership Conference.

FEEL GOOD

shop local

Shop today! First Floor, Main Lobby

or shop online, anytime!



Home & Decor
Clothing & Accessories
Food
Experiences
and more!



Enjoy **FREE SHIPPING** on your first purchase on
FeelGoodShopLocal.com
COUPON CODE: WLC2025

Expires May 3, 2025

Feel Good Shop Local is the go-to online marketplace for unique gifts, must-have items, and delightful finds. We make it easy to support local businesses while getting the quality and service you deserve!

Ask about our
**CORPORATE
GIFTING SERVICES.**



The Confident Manager



Step into leadership with confidence!
This six-week, strengths-based leadership program is designed to help you develop the skills, mindset, and strategies needed to lead effectively. Whether you're a new manager or looking to refine your approach, this course provides the tools to build on your natural strengths and empower your team.

Next session
begins May 5th
Register today!



www.maxady.com
colleen@maxady.com | 617.285.3564



BREAKOUT SESSIONS



BREAKOUT SESSION A

Practicing Embracing the Squiggles:
How to Ride the Waves of Change with
Colleen DelVecchio



BREAKOUT SESSION B

Courageous Conversations: Tackling Difficult
Discussions to Ensure Every Voice is Heard
with Jackie Glenn



BREAKOUT SESSION C

Amplifying Perception: Understanding
Others and Designing How We Are
Perceived with Shira Abel



BREAKOUT SESSION D

Amplify Your Voice with Powerhouse
Confidence with Kristie Kennedy

Amplify

BREAKOUT SESSION A

 maxady.com

 maxadylLC

 Colleen (O'Mara) DelVecchio

PRACTICING EMBRACING THE SQUIGGLES: HOW TO RIDE THE WAVES OF CHANGE

Let's face it—careers aren't a straight line anymore. They're a squiggle! We'll dive into how to embrace the unexpected twists and turns in your career and why those curveballs might be the best thing for your growth. Forget rigid plans; this talk is all about staying flexible, being open to new opportunities, and turning the unknown into your secret weapon. With fun stories, practical tips, and a little humor, you'll walk away ready to embrace change like a pro and make every zig and zag work in your favor!



ABOUT COLLEEN DELVECCHIO

Colleen DelVecchio is the Founder and Chief Maximizer at Maxady LLC, where she empowers both individuals and businesses to harness their inherent strengths. With a commitment to enhancing employee engagement, mitigating burnout, increasing belonging, and adeptly navigating the intricacies of modern business landscapes, Colleen brings a wealth of expertise to her role.

As a certified Gallup CliftonStrengths Coach, engagement consultant, keynote speaker, and career coach, she helps teams prevent burnout, foster strengths-based leadership, orchestrate organizational change, and advance staff development. Her guiding philosophy centers on enabling teams to optimize each individual's potential, thereby elevating their impact, performance, and overall job satisfaction.

Beyond her role at Maxady, Colleen is the co-host of the *Embrace the Squiggle* podcast, a platform that delves into the authentic career narratives of professional women. By encouraging unfiltered honesty, she empowers women to share both triumphs and challenges, fostering a community that transcends traditional career ladders.

Colleen holds a Bachelor of Arts in Psychology from Boston University and a Master of Science in Nonprofit Management from Bay Path University, underscoring her commitment to a holistic understanding of human behavior and effective organizational leadership.





COURAGEOUS CONVERSATIONS: TACKLING DIFFICULT DISCUSSIONS TO ENSURE EVERY VOICE IS HEARD

Courageous Conversations provides a safe and constructive environment for tackling difficult discussions, ensuring every voice is heard. This session is designed to alleviate the fear of causing offense, encouraging open dialogue that fosters understanding and drives meaningful, positive change. The result is a more cohesive and supportive workplace where employees feel valued, understood, and empowered to contribute fully.



ABOUT DR. JACKIE GLENN

Jackie Glenn is a highly regarded leader in advancing workplace transformation and inclusion. With over three decades of experience, she has spearheaded the development of global training programs—both online and in-person—that empower employees across all levels.

Jackie's expertise focuses on fostering innovation, collaboration, and a sense of belonging in multicultural and multigenerational work environments. Her strategies consistently align organizational goals with the principles of equity and engagement, driving both cultural evolution and profitability. Throughout her career, Jackie has successfully bridged corporate initiatives and entrepreneurial ventures, leaving a lasting impact on organizations worldwide.

As the Chief Diversity Officer at Fortune 500 EMC Corporation, Jackie led transformative initiatives that strengthened the company's commitment to fostering innovation, collaboration, and employee engagement, cementing EMC's leadership in the technology sector. Her strategic guidance played a pivotal role in the company's integration into Dell Technologies, where she co-led efforts to support a dynamic and inclusive global workforce.

Currently, as the Founder and CEO of Glenn Solutions, Jackie leverages her vast expertise to inspire cultural evolution and workforce transformation within organizations. She partners with executives to reimagine organizational practices and implement strategies such as cultural assessments, executive coaching, and advisory services that foster thriving, innovative workplaces.

In addition to her consultancy, Jackie is an instructor at Harvard Division of Continuing Education, where she teaches a course on Effective Sponsorship as part of the Women Leaders: Advancing Together program, continuing her mission to equip leaders with the tools to succeed and advance in today's workplace.

BREAKOUT SESSION C

shiraabel.com
shiraabelspeaker
theshiraabel
ShiraAbel
Shira Abel

AMPLIFYING PERCEPTION: UNDERSTANDING OTHERS AND DESIGNING HOW WE ARE PERCEIVED

In this interactive session, Shira Abel guides participants through practical applications of The Perception Formula™ to enhance their market presence and customer relationships. Through hands-on exercises and real-world case studies, attendees will learn to identify cognitive biases that influence buying decisions, craft messaging that resonates with their target audience, and develop strategies to build lasting customer trust. Participants will leave with actionable tools to immediately strengthen their brand perception and drive measurable business growth.



ABOUT SHIRA ABEL

Shira Abel is a world-renowned growth expert with 25 years' experience who is trusted by category-leading enterprises from Siemens, Samsung, AXA, Allianz, and many more to help understand their customers and achieve new heights. As the founder of Hunter & Bard and creator of The Perception Formula, Shira brings a unique blend of insights to her work. A Lecturer at University of California Berkeley and in-demand speaker, Shira delivers actionable advice for teams at all levels, from executives to subject matter experts. Her talks inspire and equip organizations with the tools to navigate the complexities of modern business, offering a refreshing perspective on how biases and expectations shape our success.

BREAKOUT SESSION D

AMPLIFY YOUR VOICE WITH POWERHOUSE CONFIDENCE

Imagine ...The clarity to act. The courage to lead. The confidence to excel. Unstoppable confidence is attained from the astounding accoutrements of achievement, intensely cultivated through the cauldrons of crisis, developed beneath the dungeons of despair, and infused in the luminosity of psychological invincibility.

It takes GUTS to go for the GOLD, overcome insurmountable obstacles, and speak passionately in the face of adversity from the crevices of your deepest convictions. A brand new bodacious you is emerging with a vibrant eminence that radiates for all to see. Every thread of truth and triumph becomes your powerful perspective to be shared with the world.

For whom is this golden invitation waiting? Anyone who perceives a lack of confidence in their personal appearance, has difficulty articulating individual requests with assertiveness, and is ready to embrace a powerhouse state of mind.

Amplify



ABOUT KRISTIE KENNEDY

Kristie Kennedy, The Image Confidence Expert, is an Audacious Leadership Keynote Speaker and Authentic Lifestyle Author. As the owner of Queenfidence® Global Image Consulting her electrifying inspirational gift empowers visionaries with confidence and clarity keys to find their voice, free their voice and look fabulous using their voice. She specializes in four areas of peak performance: mindset mastery, massive momentum, magnetic messaging and potential maximization. She is a Certified Radical Resilience Coach who builds powerhouse mindsets, equipped for success. Kristie's evocative teaching style elevates your self-perception from stuck to unstoppable, invisible to invincible, and timid to tenacious. Her bodacious belief is a testament that you can shift from mediocrity to magnificence one daring action step at a time.

NONPROFIT SPOTLIGHT

THE CARE CENTER is a nationally-recognized, award-winning organization based in Holyoke that helps young mothers and low-income women complete high school and go to college. Through groundbreaking programs that integrate education, arts and culture, athletics, and the bonds of community, the Care Center prepares learners to pass the High School Equivalency exam, provides college counseling and assists with applications, and offers college courses through Bard Microcollege.

We know the life-changing power of a college education, and we are so proud to support The Care Center and their ongoing work.



Give to the Care Center today!

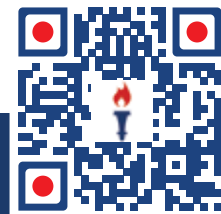
Your support helps young mothers grasp how powerful they are and reimagine the future.

The
Care
CENTER



For nearly 200 years, **Liberty Bank** has helped to improve the lives of our customers, teammates, and the communities we serve.

We are proud to sponsor this year's **Women's Leadership Conference** and delighted to connect with the inspiring and empowering women from Western New England and beyond!



SCAN TO JOIN OUR
COMMUNITIES:




LIBERTY
BANK

| Be Community Kind.™



Where You **Lead.**

The women in our communities make a difference every day by leading and driving change in our businesses.

That's why we are proud to support Bay Path's Women's Leadership Conference.



(413) 787-4000 | healthnewengland.org/community

SPN 5558-0425



CALLING ALL ALUMNI!

Please visit our Alumni Booth near the entrance to enter some great raffles and find out ways to **Amplify** your engagement!

- **Nominate** fellow alumni for our annual Alumni Awards.
- **Join** our Facebook or LinkedIn Career Networking groups.
- **RSVP** for Reunion on October 4!
- **Support** our students through a gift of ANY size.
- **Volunteer** and so much more!

SCAN. CONNECT. ENGAGE.

For links and more ways to get involved, please also visit us online:
baypath.edu/alumni



JOIN US at 1:15 on the main stage for a group photo!





Recycle More

For over 50 years, we've been working to make sure your recyclable materials are just that – recycled.

At USA, our commitment to innovation has driven us to develop one of the largest and most advanced material recovery facilities in the country. Powered by artificial intelligence and state-of-the-art scanning technology, this award-winning system has been designed to recycle more quickly, cleanly and efficiently than ever before.

This means our customers can now recycle items such as "black plastics," cold cups and lids, yogurt containers, and all #5 packaging, which are considered non-recyclable, or trash, at most recycling facilities in the country. [usarecycle.com](https://www.usarecycle.com)



Celebrated 25 Years of Broadcast Excellence in 2024!

Proud of over 20 years sponsoring Bay Path University's Women's Leadership Conference



Carol Moore Cutting
President, Owner, and CEO
Cutting Edge Broadcasting, Inc.

Bay Path University
Women's Business Leaders
Hall of Fame Inductee
Class of 2008



WEIB-106.3-Smooth FM is the **ONLY LOCALLY OWNED AND INDEPENDENT** Commercial FM Radio Station in the Greater Springfield, MA Metro Market

The **ONLY FEMALE OWNED** Commercial FM Radio Station in Massachusetts

The **ONLY BLACK/AFRICAN AMERICAN OWNED** Radio Station (AM or FM) in All of New England



MGM Springfield is a proud sponsor of Bay Path University's 2025 Women's Leadership Conference

Visit MGMSpringfield.com to learn more about the premier destination for entertainment, gaming and dining in the heart of downtown Springfield.

GameSenseMA.com · Use your GameSense · Helpline 1.800.327.5050 · Must be 21 or older





WELLFLEET
a Wellfleet Workgroup Company

[wellfleetinsurance.com/careers](https://www.wellfleetinsurance.com/careers)

Wellfleet, Wellfleet Student, Wellfleet Special Risk, and Wellfleet Workplace are marketing names used to refer to the insurance and administrative operations of Wellfleet Insurance Company, Wellfleet New York Insurance Company, and Wellfleet Group, LLC (known in California only as Wellfleet Group, LLC dba Wellfleet Administrators, LLC). All insurance products are administered or managed by Wellfleet Group, LLC. Product availability is based upon business and/or regulatory approval and may differ among states.
©2025 Wellfleet Group, LLC. All Rights Reserved.

CORP-JANUARY-2025-08



**BUILDING
COMMUNITY SINCE 1918**



413.785.1947 | GRODSKY.COM


Mechanical Contractors, Engineers & Service Providers



Explore our Wide Range of Services

Discover personalized care for every stage of life, from short-term rehab to independent living, assisted living, memory care, skilled nursing, VNA services, and hospice. Whether you need seasonal support or long-term planning, we're here for you.

Contact Mary-Anne Schelb,
Regional Director of Business Development,
at 413-935-1791 to explore your options.

**A perfect home starts
from the floor up.**

Looking for Flooring, Backsplash, Shower Tile, Area Rugs, or Installation? Hampton Flooring Center is the place for you!

WBE Certified | 30+ Years of Sales & Install Experience
Superior Quality, Design Help, and Customer Service
250 Northampton St. Easthampton, MA
413-527-5279
www.hamptonflooringcenter.com



Proud supporter of difference makers

KPMG is proud to support Bay Path University and the Women's Leadership Conference. Your commitment, determination and insight will have a powerful impact on making a difference for years to come. Discover more at kpmg.com

KPMG. Make the Difference.


© 2025 KPMG LLP, a Delaware limited liability partnership and a member firm of the KPMG global organization of independent member firms affiliated with KPMG International Limited, a private English company limited by guarantee. USCS0261611A




K-12 Tuition Free Public Charter School that strives to help our students to achieve their full potential, prepare them for success in college, equip them with the ability and desire for lifelong learning, and strengthen their civic, ethical, and moral values.



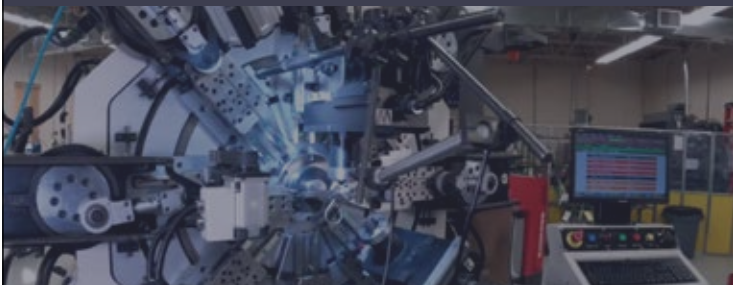
 SICS.org

 413-783-2600

 160 Joan St Springfield, MA 01129



Certified Minority Owned
ISO 13485: 2016 Certified
ISO 9001: 2015 Certified



PRECISION SPRING MANUFACTURING INDUSTRY LEADER

Springfield Spring & Stamping is a trusted industry leader in custom springs, wire forms, and metal components. With decades of expertise, we deliver high quality, engineered solutions to meet the toughest demands.

LOOKING TO GROW YOUR CAREER?

We're expanding our Sales & Marketing Team! If you're passionate about driving business growth and working with a dynamic team, we want to hear from you. Contact us at HR@springfieldspring.com.



+1 413-525-6837



www.springfieldspring.com



Inspiring Success Through People

Are you looking for your next top talent?

Entry-Level to C-Suite, We Are Here To Assist You!

Benefits:

- Saves You Time
- Reduces Cost
- Decreases Risk
- Increases Flexibility

Specializing In:

- Healthcare
- Insurance
- Non-Profit
- And Many More

FLEXIBLE SOLUTIONS TO FIT YOUR BUSINESS NEEDS



www.TheMHGrp.com



413-788-0751

Get the story behind the story, the latest trends across all industries, and expert-provided content.

**Subscribe
Today!**

— \$45 for 1 year —



BW

413-781-8600 BusinessWest.com

**DESIGN YOUR
NEXT CAREER**

Squiggle

We see it all the time - you don't want to continue in your current career, but have no idea what you want to do next! You feel stuck, exhausted, and unsure where to begin the process.

Before you jump into updating your resume and applying for jobs, take time to figure out what your next career chapter could be. One that's meaningful, energizes you and feeds your full life.

**Next Session
begin April 22nd**

Register today!



www.maxady.com/workshops
training@maxady.com | 617.285.3564

The
Care
CENTER

MICRO
Bard
HOLYOKE COLLEGE

THE CLEMENTE COURSE
IN THE HUMANITIES®

The Care Center houses transformative high school and college programs for young mothers and women whose educations have been interrupted by parenting, financial challenges, and other systemic barriers.

The Care Center couples rigorous academics, arts, and athletics, with childcare, counseling, transportation, meals, and other critical services. In this inspiring and supportive environment, women complete high school, succeed in our on-site college, and change the trajectory for their families.



**TUITION & BOOKS
FULLY COVERED
BY SCHOLARSHIPS
& GRANTS**

THE CARE CENTER | 247 Cabot Street | Holyoke, MA 01040 | 413-532-2900 | carecenterholyokey.org



Amherst College



CANNA PROVISIONS

VOTED BEST CANNABIS DISPENSARY!



Meg Sanders
Founder & CEO

**WOMAN LED
EMPLOYEE OWNED**

STOP BY OUR BOOTH TO LEARN MORE ABOUT CANNABIS & SELF CARE!

**YOU
DESERVE
THE BEST!**

TWO CONVENIENT LOCATIONS

Holyoke, MA Lee, MA
380 Dwight St. 220 Housatonic St.

**SCAN TO
SHOP!**



Please Consume Responsibly. This product may cause impairment and may be habit forming. For use only by adults 21 years of age or older. Keep out of the reach of children. This product has not been analyzed or approved by the Food and Drug Administration (FDA). This is limited information on the side effects of using this product, and there may be associated health risks. Marijuana used during pregnancy and breast-feeding may pose potential harms. It is against the law to drive or operate machinery when under the influence of this product. KEEP THIS PRODUCT AWAY FROM CHILDREN. There may be health risks associated with consumption of this product. Marijuana can impair concentration, coordination, and judgment. The effects of Edibles may be delayed by two hours or more. In case of accidental ingestion, contact poison control hotline 1-800-222-1222 or 9-1-1. This product may be illegal outside of MA.



Hope and healing starts here.

If you or a loved one is struggling with mental health or co-occurring issues, there's no need to face these challenges alone. Recovery is possible when you have the right tools and support.

Valley Springs offers inpatient, partial hospitalization and intensive outpatient programs for children and adolescents (5-17), adults and geriatric patients.



Call to schedule a confidential assessment or to make a referral.

45 Lower Westfield Rd. | Holyoke, MA 01040 | **413.315.4100**

VALLEYSPRINGSBH.COM

Bacon / Wilson

ATTORNEYS AT LAW

1895 **130** YEARS 2025

ANNIVERSARY

SPRINGFIELD

AMHERST

NORTHAMPTON

WESTFIELD

- Banking and Commercial Finance
- Bankruptcy and Reorganization
- Business and Corporate
- Cannabis
- Civil Litigation
- Criminal Litigation
- Domestic Relations and Family Law
- Elder Law
- Employment Law
- Estate Planning

- Injuries and Accidents
- Landlord and Tenant Issues
- Land Use/Zoning/Environmental
- Mediation and Alternative Dispute Resolution
- Municipal
- Real Estate
- Special Needs Care Planning
- Trusts and Estates
- Workers Compensation

413.781.0560

BaconWilson.com

SHE NEEDED A HERO, SO THAT'S WHAT SHE BECAME

A Proud Sponsor of Bay Path University's Women's Leadership Conference

ZOZIMUS

LET'S DREAM BIGGER, TOGETHER

DATA DRIVEN DIGITAL MARKETING & PR AGENCY

zozimus.com

OUR MISSION

The Women's Fund of Western Massachusetts (WFWM) fuels progress toward gender equity by funding the most promising solutions, collaborating with results-oriented partners, and elevating the collective power of local women to take charge and lead with purpose.

GRANTMAKING

RESEARCH & ADVOCACY

YOUNG WOMEN'S INITIATIVE (YWI)

MYWOMENSFUND.ORG

Lead with Purpose, Amplify with Confidence.

Results Driven. Woman Owned.

Elevating brands through strategic insight and bold creativity since 1985.



CREATIVE. PRINT. MAIL.



**Lamar Advertising is
proud to celebrate 20
years of partnering with
Bay Path University,
supporting the empowerment
and success of women in
the Springfield area.**




LAMAR OF CONNECTICUT-WESTERN MASSACHUSETTS
(860)246-6546 | Lamar.com/Connecticut

LEAH MARTIN PHOTOGRAPHY

Every moment is your story



Capture it.

413-595-1465  leah@leahmartinphoto.com

www.leahmartinphoto.com

Unlock the power
to be big and bold.



At bankESB, we believe everyone deserves a fair shot to unlock their potential. That's why we're proud to support Bay Path University's annual Women's Leadership Conference and their efforts to empower and lift up women leaders and their allies.



Unlock your potential

Member FDIC | Member DIF



Mercedes-Benz
of Springfield

It's Not Business, It's Personal.™



Proud Supporter Of The



Visit us on the 1st floor lobby near
the entrance to the main stage.



Michelle Wirth
Owner

Peter Wirth
Owner



413.525.4044 | pipne.com | 877.827.7802

East Longmeadow MA | Hartford CT | Waltham MA

www.mbspringfield.com

295 Burnett Road, Chicopee, MA 01020
413-624-4100



GARLAND CONSTRUCTION CORPORATION

40 Old James St.
Chicopee, MA.

413-533-7699

www.garlandconstructioncorp.com



Get the Staffing Solution that Fits

The BANKW Staffing family of companies are all locally owned, full-service staffing and recruiting agencies that help employers find custom solutions to their employment needs and match job seekers with positions that meet their individual career goals and qualifications. Regardless of which of our companies you partner with, we offer a full suite of staffing and recruiting services including:

- Temporary & Contract Placement
- Temporary-to-Permanent Placement
- Direct-Hire Placement
- Executive Search Services



Specialized Sales Recruiting & Search

- Director of Sales
- Inside/Outside Sales Executives
- Business Development Representatives
- Account Manager
- Lead Development Representative

www.salessearchpartners.com | 617-422-6080



Accounting & Finance Professionals

- Chief Financial Officer
- Controller
- Account Manager
- Staff Accountant/Bookkeeper
- Accounts Payable/Receivable
- Collections
- Financial Analyst/Series Analyst
- Purchasing Specialist

www.kbwfinancial.com | 781-804-4300



Human Resources, Legal & Administrative Staffing

- Executive/Administrative Assistant
- Human Resource Professionals
- Talent Acquisition
- HRIS
- Customer Service Representatives
- Clinical Personnel
- Paralegal
- Telemarketing/Inside sales

www.naglergroup.com | 617-422-0111



IT Recruiting & Project Staffing Solutions

- PC and Network Support
- Application Development
- QA/Testing
- Helpdesk/Product Support
- Database Development
- Project Management
- Business Intelligence
- Software Engineer
- Network Administration
- IT Manager/Director
- CIO/CTO

www.alexandertp.com | 617-422-0064



2008 JOB OF THE FUTURE
SOLUTIONS STARTING HERE



603.637.4500 | BANKW Staffing, LLC | www.bankwstaffing.com

BEDFORD, NH | BOSTON, MA | PORTSMOUTH, NH | WOBURN, MA | WESTBOROUGH, MA | SPRINGFIELD, MA | HARTFORD, CT



Women Empowering Women

We are powered by a workforce of about 600 employees with diverse personal and professional backgrounds, and united by our shared values of expertise, respect, dependability, innovation, and collaboration.

Together we are solving the grid's greatest challenges to create a cleaner, more efficient energy system to power our lives.



ENTRE
Technologies

Relationships.
Experience.
Growth.

IT Service. **Elevated.**



No Contracts - We Earn Your Business Every Month



7:00am-7:00pm Live Help Desk



90 Minute SLA



247/365 Support



Regular Onsite Visits



4 Hour Onsite Response



Your Data - Under Your Control



40+ Years of Experience

All Industry Verticals
Desktop to Datacenter
Cyber Security
Managed Services
Solution Sales and Implementation

Entre Technologies

138 Memorial Avenue, West Springfield MA
413.736.2112
www.go2entre.com

Call Today!

Proud Sponsor of the 2025
Women's Leadership Conference

Tapestry Health

Community-Based Healthcare | Education | Support Services

Sexual & Reproductive Health

We provide comprehensive care, including pap tests, STI testing, and medication abortion care in a confidential, affirming environment.

Harm Reduction

Our mobile health unit brings services to the community, including drug checking, Naloxone (life-saving overdose response) distribution, and connection to supportive resources.



TapestryHealth.org | @TapestryWMass











MARRIOTT
SPRINGFIELD
DOWNTOWN

BRIDGE22

Hotel: 413-781-7111
Groups & Events: 413-251-6250
www.marriott.com/BDLMS

Holland & Knight is proud to sponsor

Bay Path University's 2025 Women's Leadership Conference.

We support the WLC in its mission to offer leadership development, networking opportunities and professional and personal enrichment for women.

Holland & Knight

www.hklaw.com

Boston, MA | +1.617.523.2700

Copyright © 2025 Holland & Knight LLP All Rights Reserved



is proud to support

Bay Path University Women's Leadership Conference

We Serve
Retirement Plans
Nonprofit Organizations
Financial Institutions
Private Clients

Whatever our role, the goal remains the same: to deliver timely, effective investment consulting services essential to achieving a superior result.

800-260-5445

www.fiducientadvisors.com



 NOTES

[illegible]



 NOTES

[illegible]



 NOTES

[illegible]



EXHIBITOR LIST

6 BRICK'S CANNABIS DISPENSARY

ACTIVE LIFESTYLE FITNESS, LLC

ALIANZA

ALTUS DENTAL

ALYN CALEY

ANDREW ASSOCIATES

AQUIDNECK HONEY

BARD MICROCOLLEGE HOLYOKE AND THE CARE CENTER

BLOOMS FLOWER TRUCK & STUDIO LLC

BODHI BOUTIQUE

BAY PATH UNIVERSITY

BRIGHTER DAY PHYSICAL THERAPY & WELLNESS

BUSINESSWEST

CAMBRIDGE CREDIT COUNSELING

CANNA PROVISIONS

CARING HEALTH CENTER

CARYN'S CORNER

CENTER FOR VEIN RESTORATION

CITRUS SKY BOUTIQUE

D.HOTEL SUITES & SPA

DESIGNSBYPMM

DR. GLEN BROOKS

E. BRAASTAD GLASS

FEEL GOOD SHOP LOCAL

GIRL SCOUTS OF CT

GIRLS INC.

GOLDEN MAGNOLIA

HEALTH NEW ENGLAND

HUSTLE & HEART

JGS LIFECARE

KAREN'S SPARKLE SQUAD BY TOUCHSTONE CRYSTAL

LEAH MARTIN PHOTOGRAPHY

MARABOU JEWELRY

MARY KAY

MATTOON SOAP

MAXADY

MENTAL HEALTH ASSOCIATION INC.

MERCEDES-BENZ OF SPRINGFIELD

METAMORPHOSIS CREATING THE CHANGE

MGM SPRINGFIELD

NICHOLS

OVARIUM CONCEPTION

PATTY CAKES GOURMET CUPCAKES

PAYLOCITY

PEARL AND COMPANY, LLC

SKM COLLECTION

SWEAT POWER YOGA

SWEET BABU'S

SWEET SOUL STUDIO

TAPESTRY HEALTH

THE MH GROUP STAFFING & RECRUITING

THE MILL DISTRICT GENERAL STORE & LOCAL ART GALLERY

THE SPHERE NORTHAMPTON

WEIB 106.3 SMOOTH FM

WELLFLEET

WICKED GOOD TREATS BY ELAINE

YANKEE CANDLE VILLAGE

AMPLIFY SPONSORS



PLATINUM SPONSORS



GOLD SPONSORS



SILVER SPONSORS



BRONZE SPONSORS



SUPPORTER SPONSORS

Amherst College

Bacon Wilson, P.C.

bankESB

BANKW Staffing

Center for Vein Restoration

Dan & Jane Roulier

Entre Technologies

Garland Construction

Grodsky

Hampton Flooring Center Inc

Jablonski DeVriese Architects

KPMG

PIP New England

Springfield International
Charter School

Springfield Spring

Stop & Shop

Tapestry Health

Valley Springs Behavioral
Health Hospital

Wellfleet

Women's Fund

Zozimus

THANK YOU
TO OUR
SPONSORS

A special thank you to **The Bushnell Family, Eileen Stern, Doreen Spencer, Mary Ann Spencer, The Beveridge Family Foundation,** and **Marcotte Ford** for sponsoring Bay Path University student seats and transportation.

